



# Access SDK

## **Compumedics Neuroscan Real-Time SDK** (Software Development Kit)

*Researchers using Compumedics Neuroscan products have always pushed the boundaries of science and technology and we have always supported their efforts. Our new SDK (Software Developers Kit) offers a completely new level of access. Now advanced users have the freedom to directly access our hardware to obtain physiological data in a format that interacts with custom software you design and control. With Access SDK we offer the option to get the data you need without requiring the additional expense of our renowned SCAN or ProFusion software packages.*



# Presenting the Compumedics Access SDK (Software Development Kit), the latest SDK from Compumedics Neuroscan.

## Who should use this?

Access SDK was developed for the researcher wanting access to data acquired using the powerful, proven Compumedics Neuroscan range of clinically approved and safety certified physiological amplifiers. Access SDK does not require any additional Compumedics or Neuroscan software.

## What can it do?

- Provide real-time configuration and capture of data directly from our amplifiers
- Obtain impedance-measurements
- Allows you to build your own applications leveraging our high quality FDA and CE cleared amplifiers. (Note: Any user-developed software will require separate regulatory approval and is not covered by the amplifier approvals.)

## Access SDK Real-Time Software Development Kit Includes:

1. Complete Amplifier drivers
2. Driver Documentation
3. Visual Studio C++ source code sample
4. Labview application and source code samples
5. MatLab source code samples
6. Access SDK License for amplifier drivers
7. 12 months e-support on "Access Real-Time SDK" forums

## The Access Real-Time SDK currently supports

- Compumedics Siesta 802
- Compumedics Neuroscan SynAmps2
- Compumedics E-Series Amplifiers

## Investment

- Access Real-Time SDK (Software Development Kit) includes 12 months e-support and access to "Real-Time SDK" forums. Consult your local representative for more information.

## Related products

- "Offline" SDK
- Compumedics Amplifiers :



Siesta 802



SynAmps<sup>2</sup>



E-Series

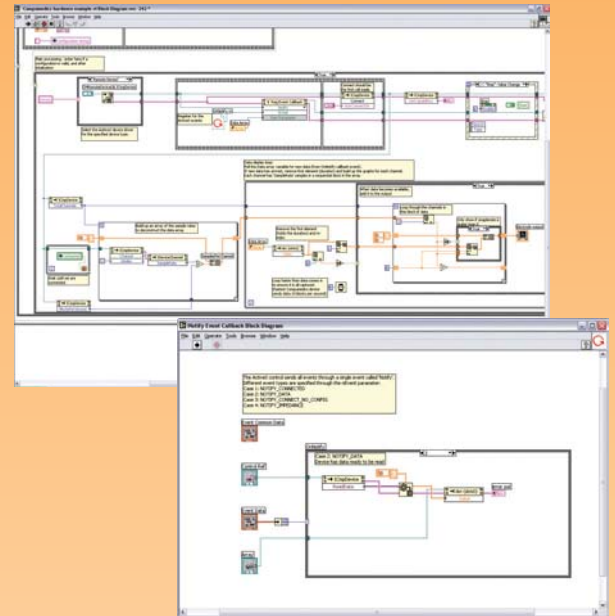
Neuroscan Access SDK Part number: 9100-0001-01

## Compumedics divisions:

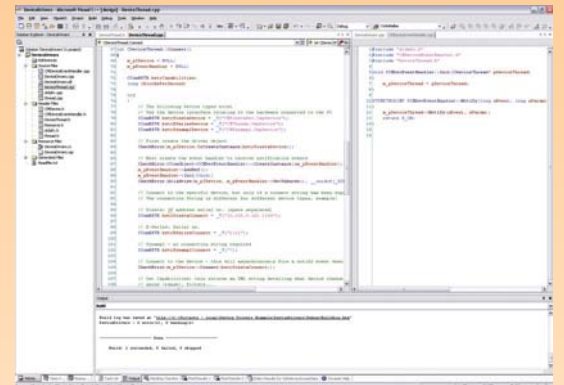


Please contact us for more information about this product or any other Compumedics products. [www.compumedics.com](http://www.compumedics.com)

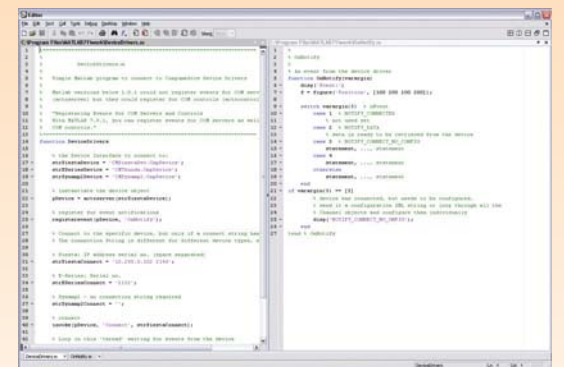
<b>Compumedics USA Ltd:</b> Toll Free: 1 877 717 3975 Fax: 1 915 845 2965	<b>Compumedics Limited, Australia:</b> Tel: +61 3 8420 7300 Fax: +61 3 8420 7399 Free Call: 1800 651 751	<b>Compumedics Germany GmbH:</b> Hamburg Office (Europe HQ for Neuroscan, Neuroscience & Sleep): Tel: +49 40 40 18 99 41 Fax: +49 40 40 18 99 49
---	---	---



Screenshots of LabView



Screenshot of C++ coding



Screenshot of MatLab

