

® CURRY SCAN 7 Neuroimaging Suite – Highlights

*The time has come for a significant change in the way you **think** about and **handle** data processing and analysis.*

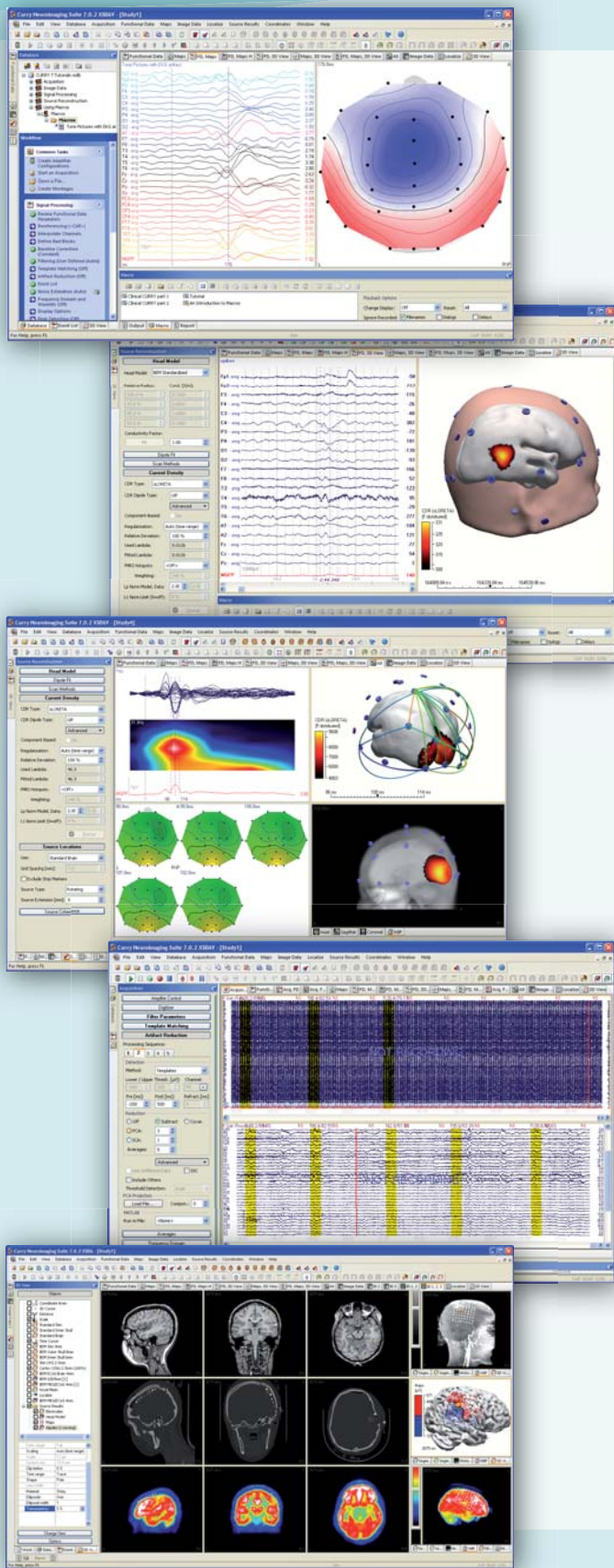
This change comes in the form of the new Compumedics Neuroscan's CURRY Scan 7 Neuroimaging Suite.

The CURRY Scan 7 Neuroimaging Suite supercedes the SCAN and CURRY software packages.

The history of the CURRY software is well known. Throughout the world, CURRY has the well deserved reputation as the most advanced and comprehensive tool for Multimodal Neuroimaging. CURRY's strength has historically been combining functional data such as EEG and MEG with structural data from MRI and CT to optimize source reconstruction.

Now Compumedics Neuroscan combines CURRY's strength with the acquisition and signal processing features of the SCAN software for a comprehensive EEG acquisition, data analysis, source localization and source imaging package - all in the one powerful, streamlined and intuitive CURRY Scan 7 Neuroimaging Suite.

See More and Do More



Database and Workflow modules provide powerful organizational tools and walkthrough functions. The macro recorder on the bottom provides for comprehensive automation functions.

The data shown illustrate topographic mapping of an averaged auditory evoked response on a standard head model.

The CURRY Scan 7 Neuroimaging Suite achieves **greater signal processing power**. Transforms are automatically and immediately applied to the data.

The data shown depicts a current density reconstruction of spike data on a standardized realistic brain model.

Multi-view displays allow you to see many aspects of your data at one time.

The data shown (clockwise from top left) are a butterfly plot of P100 data and the corresponding STFFT data; coherence between recorded channels; a Maximum Intensity Projection of the head with a sLORETA source reconstruction; and 2D contour maps of the P100 component.

Advanced artifact reduction tools are a standard part of the Signal Processing features in the CURRY Scan 7 Neuroimaging Suite.

Multi-view display showing EEG data recorded in the MRI (Top) in its raw form, and corrected with the latest tools for gradient and BCG artifact reduction (Bottom).

The CURRY Scan 7 Neuroimaging Suite excels in multimodal neuroimaging with its ability to **combine various types of image data with functional data**.

In this example, MRI, CT, and PET data are coregistered with each other and with the cortical grid EEG data (epileptic spike) to provide unique perspectives of the dipole source of the spike.

www.neuroscan.com

 **COMPUMEDICS**
www.compumedics.com

Compumedics USA, Inc.:
6605 West WT Harris Blvd, Suite F
Charlotte, NC 28269
Toll Free: +1 877 717 3975
Ph: +1 704 749 3200
Fax: +1 704 749 3299

Compumedics Limited, Australia:
Headquarters
30-40 Flockhart Street
Abbotsford VIC 3067, Australia
Ph: +61 3 8420 7300
Fax: +61 3 8420 7399
Free Call: 1800 651 751

Compumedics Germany GmbH:
Global HQ for Compumedics DWL
Josef-Schüttler-Strasse 2
D-78224 Singen, Germany
Ph: +49 7731 79 76 9-0
Fax: +49 7731 79 76 9-99



AF642 Issue 1

See More and Do More

